

2009-10 Lorain County Schools

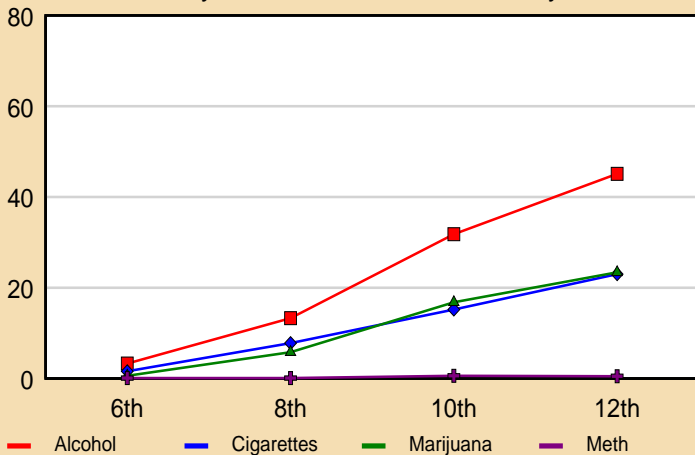
Created by Pride Surveys

October 26, 2009

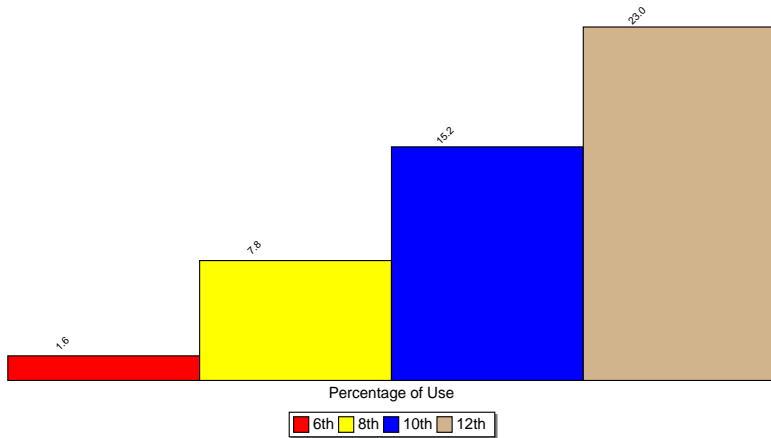
Outline

- 1 Frequency of Use
- 2 Perception of Risk
- 3 Parental Dissapproval
- 4 Average Age of Onset
- 5 Availability
- 6 Risk and Protective Factors

Past-30-Day Use of Selected ATODs by Grade

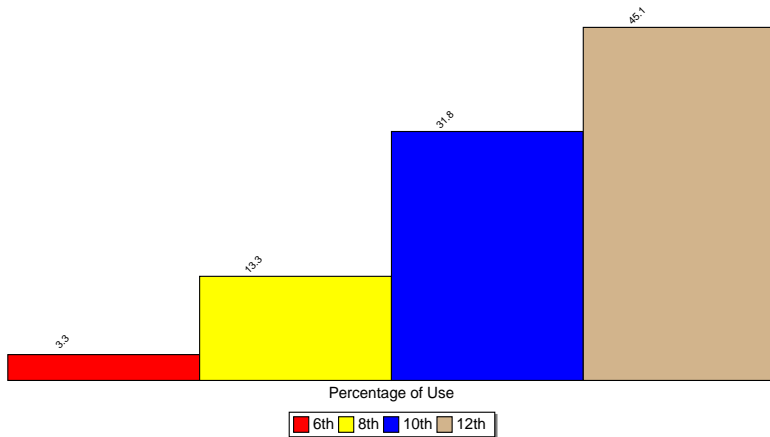


Reported Use in the Past 30 Days of Cigarettes



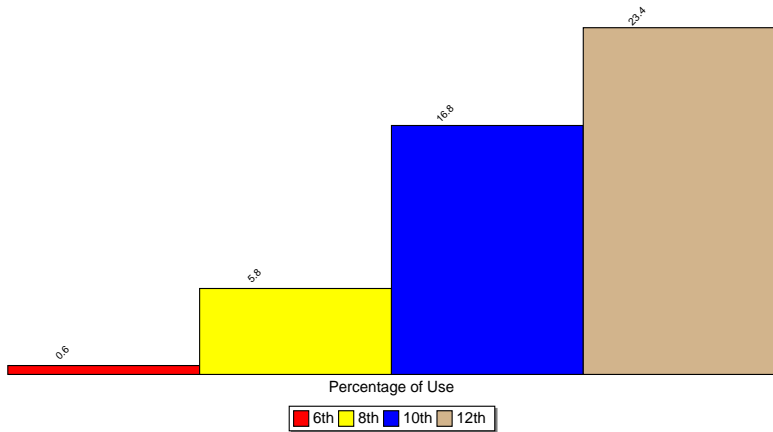
Source: Pride Surveys

Reported Use in the Past 30 Days of Beer, Wine or Hard Liquor



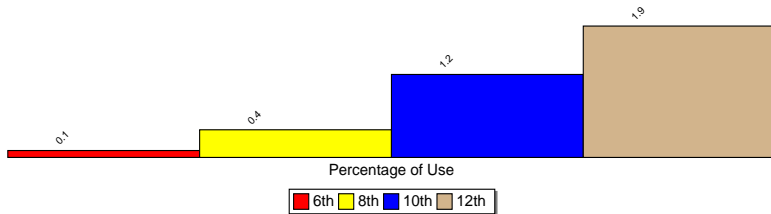
Source: Pride Surveys

Reported Use in the Past 30 Days of Marijuana



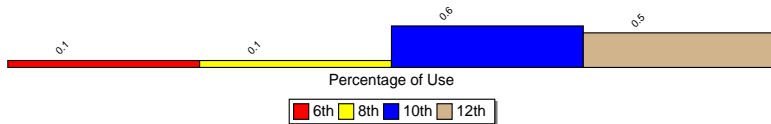
Source: Pride Surveys

Reported Use in the Past 30 Days of Cocaine



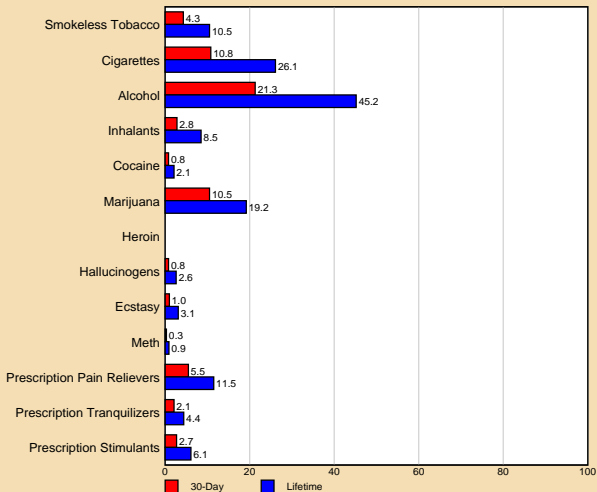
Source: Pride Surveys

Reported Use in the Past 30 Days of Meth

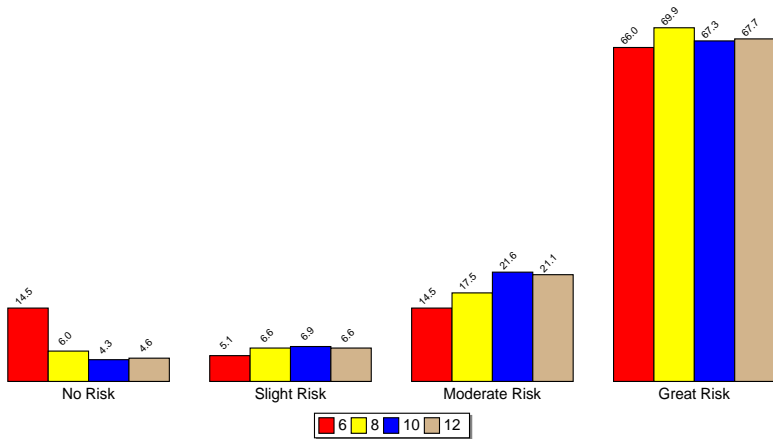


Source: Pride Surveys

2009-10 Lorain County Schools

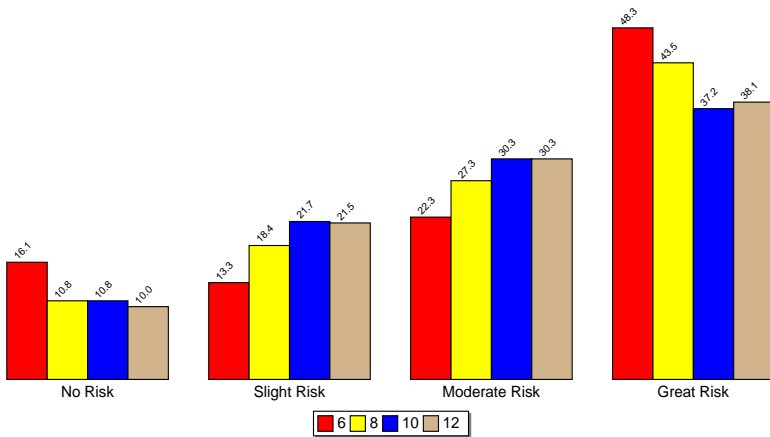


Perception of Risk -- Cigarettes



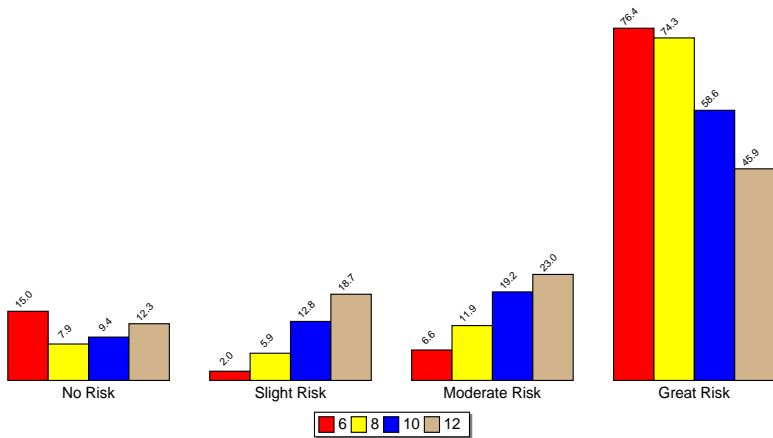
Source: Pride Surveys

Perception of Risk -- Alcohol



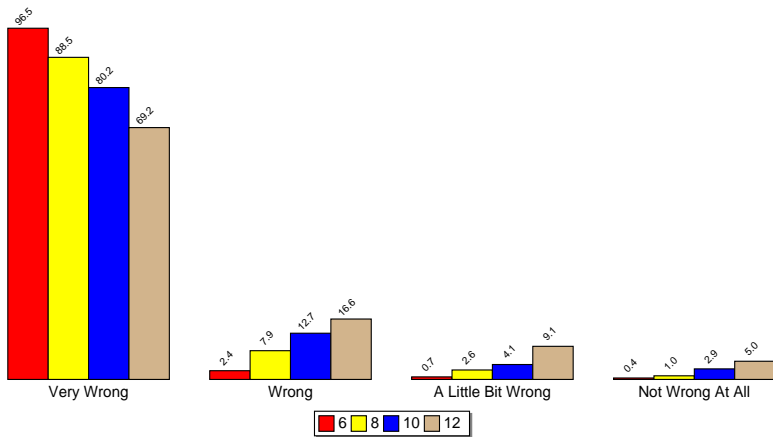
Source: Pride Surveys

Perception of Risk -- Marijuana



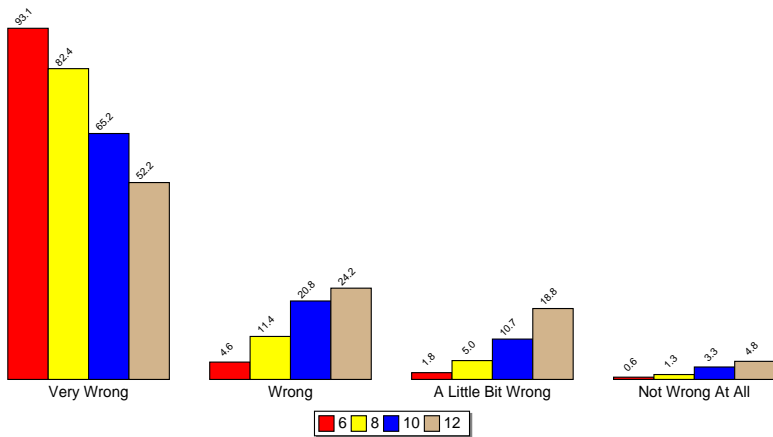
Source: Pride Surveys

Parental Disapproval -- Smoke Cigarettes



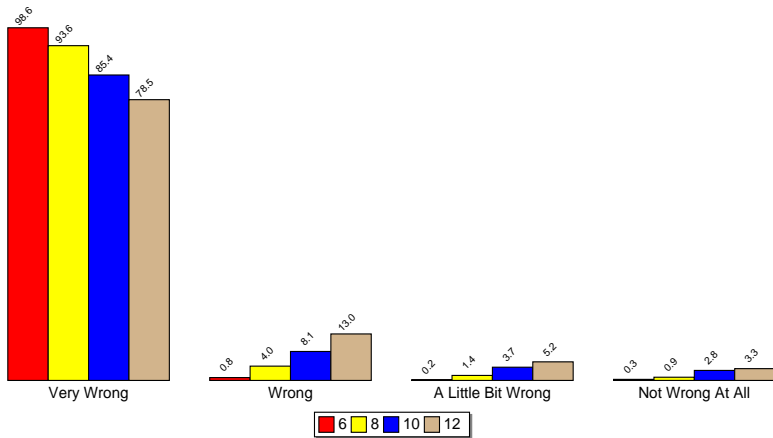
Source: Pride Surveys

Parental Disapproval -- Drink Alcohol



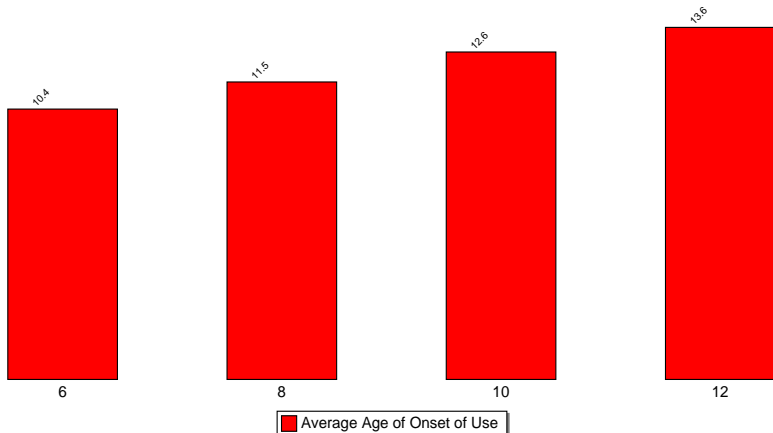
Source: Pride Surveys

Parental Disapproval -- Smoke Marijuana



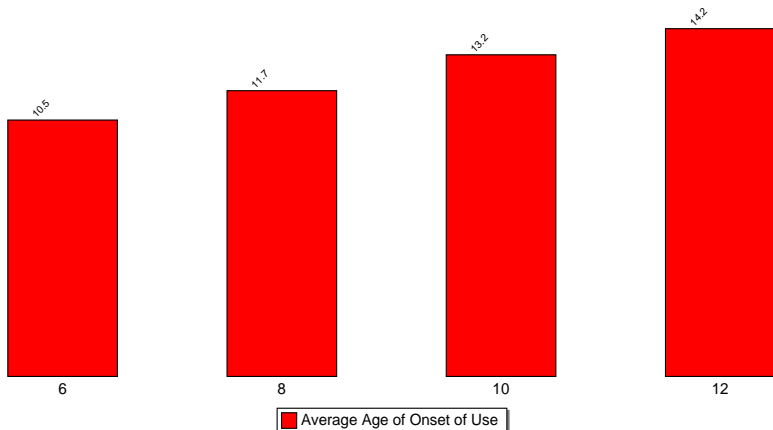
Source: Pride Surveys

Average Age of Onset of Use of Cigarettes



Source: Pride Surveys

Average Age of Onset of Use of Alcohol



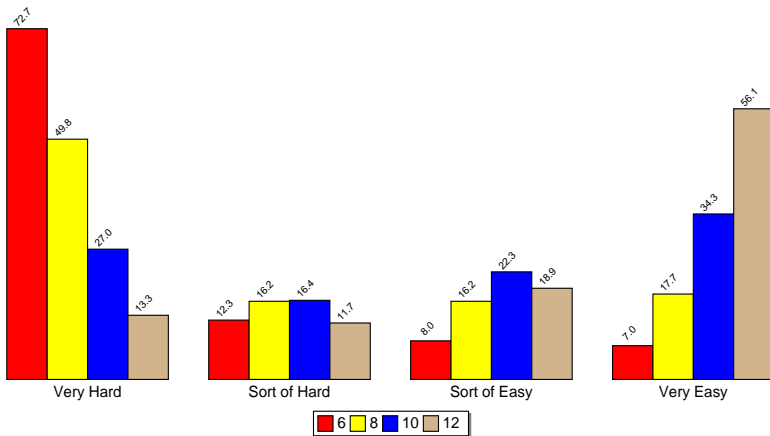
Source: Pride Surveys

Average Age of Onset of Use of Marijuana



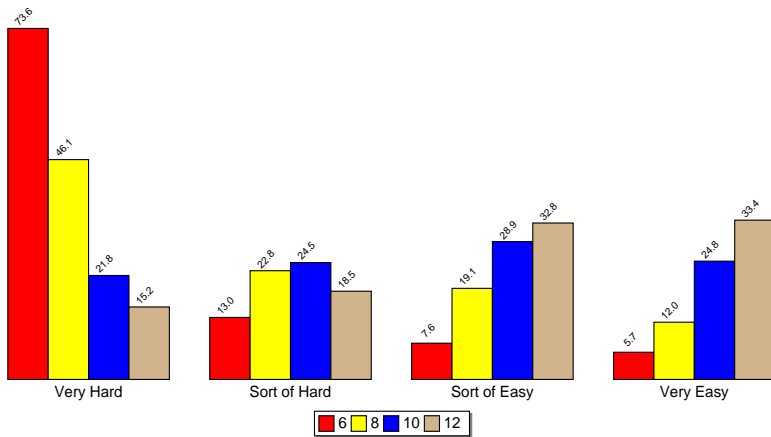
Source: Pride Surveys

Availability -- Cigarettes



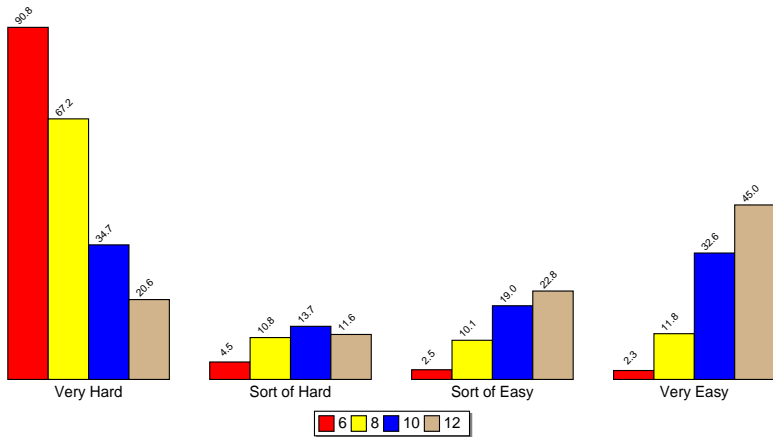
Source: Pride Surveys

Availability -- Alcohol



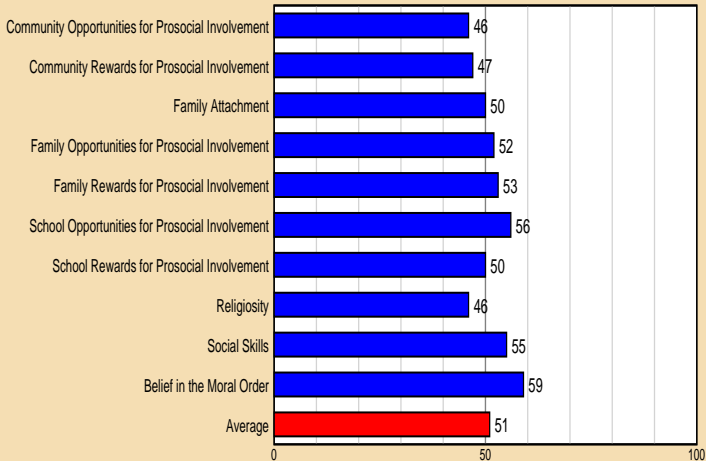
Source: Pride Surveys

Availability -- Marijuana



Source: Pride Surveys

Overall Protective Factor Scale Scores



Overall Risk Factor Scale Scores

